

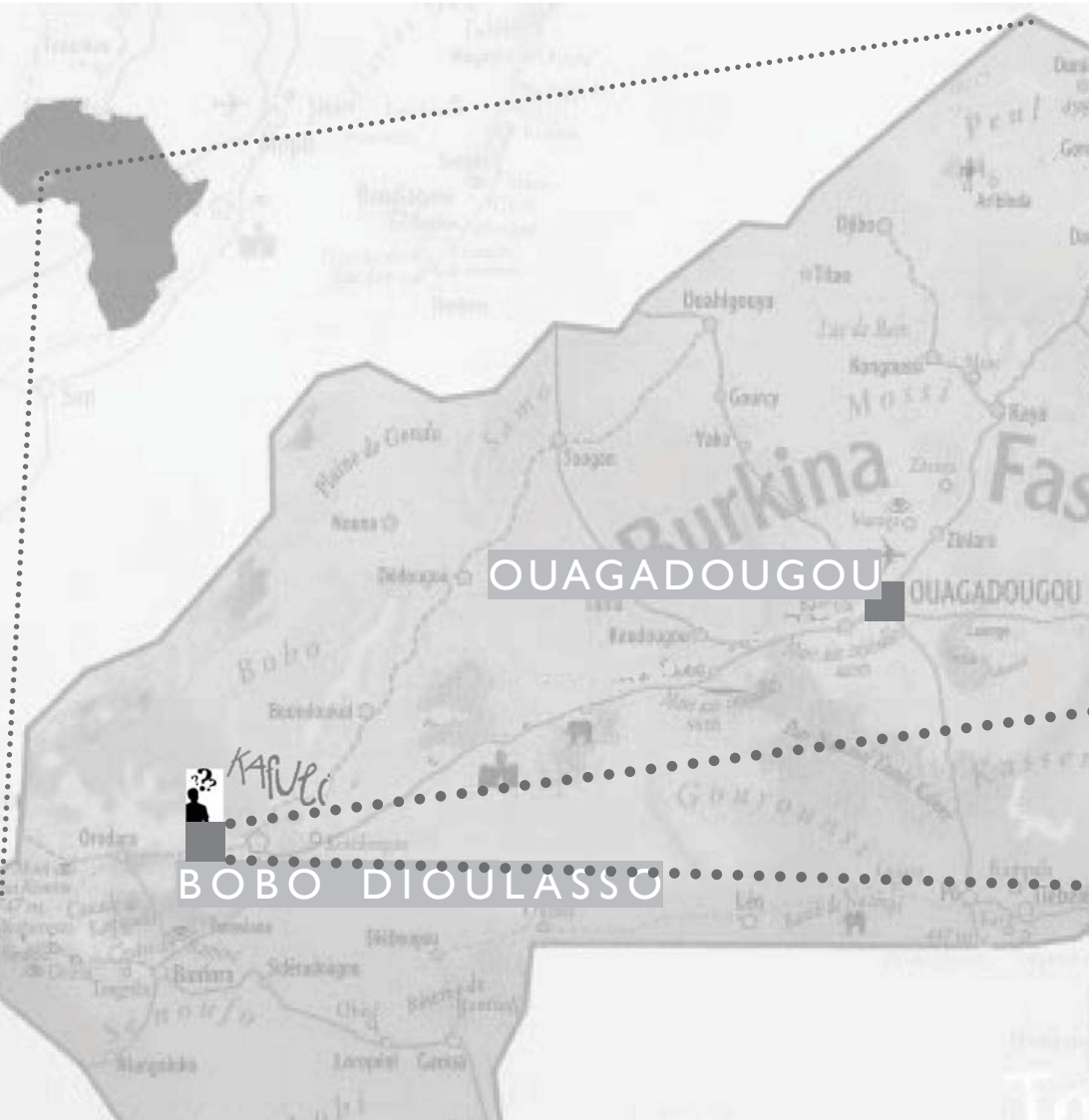
Kafu

THE ART SHELTER FOR THE WOMEN - WEAVERS



THE ART SHELTER FOR THE WOMEN - **WEAVERS**

KafuP*i*



THE ART SHELTER FOR THE WOMEN - **WEAVERS** *Kafu*



THE ART SHELTER FOR THE WOMEN - WEAVERS

Kafu



THE ART SHELTER FOR THE WOMEN - WEAVERS

Kafu



THE ART SHELTER FOR THE WOMEN - WEAVERS

KafuLi



THE ART SHELTER FOR THE WOMEN - WEAVERS

KafuLi

CIGLER | MARANI UNLIMITED

ARTSHELTER IN COURTYARD

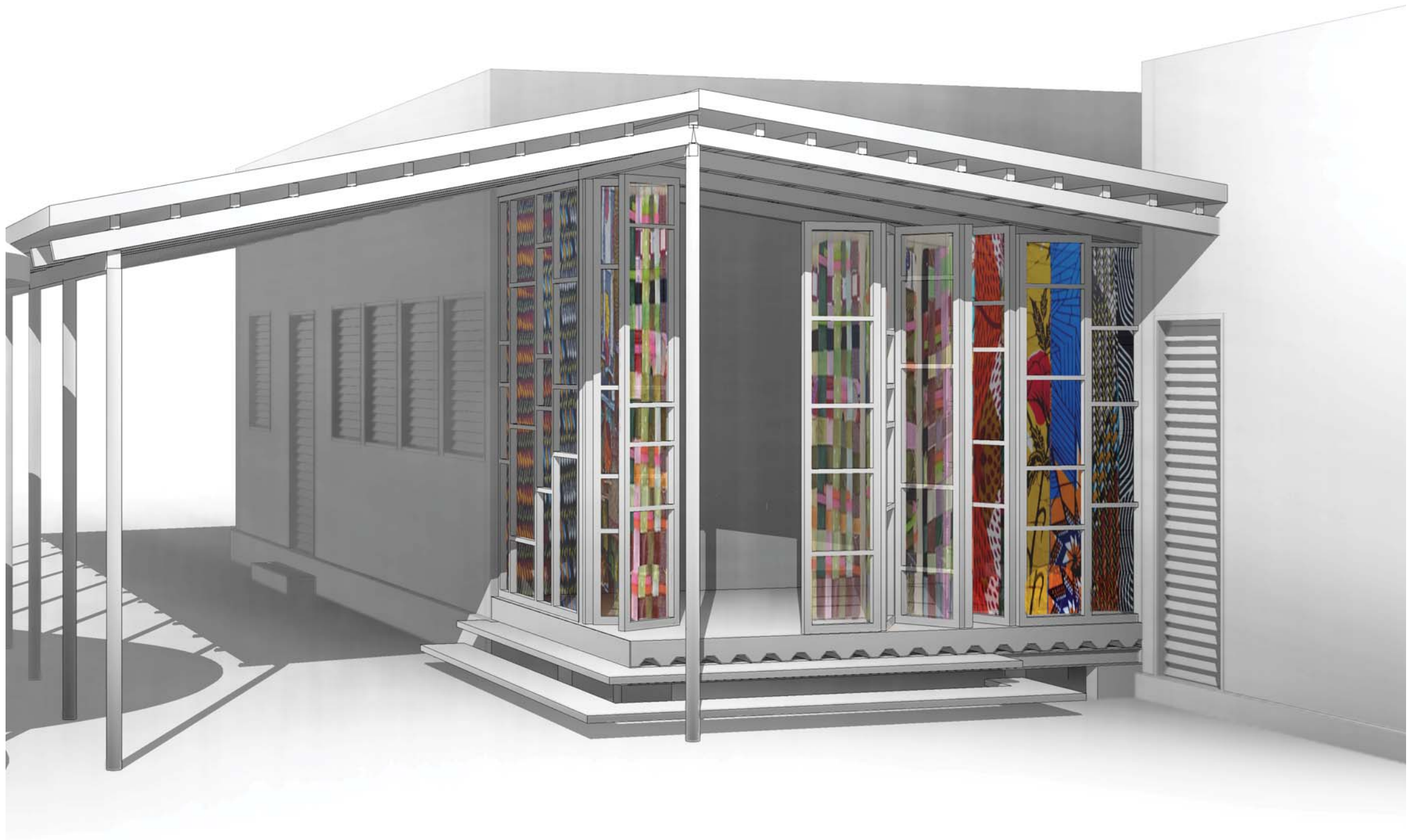


THE ART SHELTER FOR THE WOMEN - **WEAVERS**

KafiUpi

CIGLER | MARANI UNLIMITED

VIZUALISATION




THE ART SHELTER FOR THE WOMEN - **WEAVERS**

KafiUpi

CIGLER | MARANI UNLIMITED

MAIN PRINCIPLE



∴ **LOCAL MATERIALS** – to make the courtyard more compact in materials and colours
– unified transition between local-looking guesthouses and “a bit modern” library

∴ **PARAVENTS = SCREENWALLS = VITRINE** – to display the work of women and to create “airy” architecture that will not oppress the Kafuli courtyard that is not that big as it seems when it is empty...

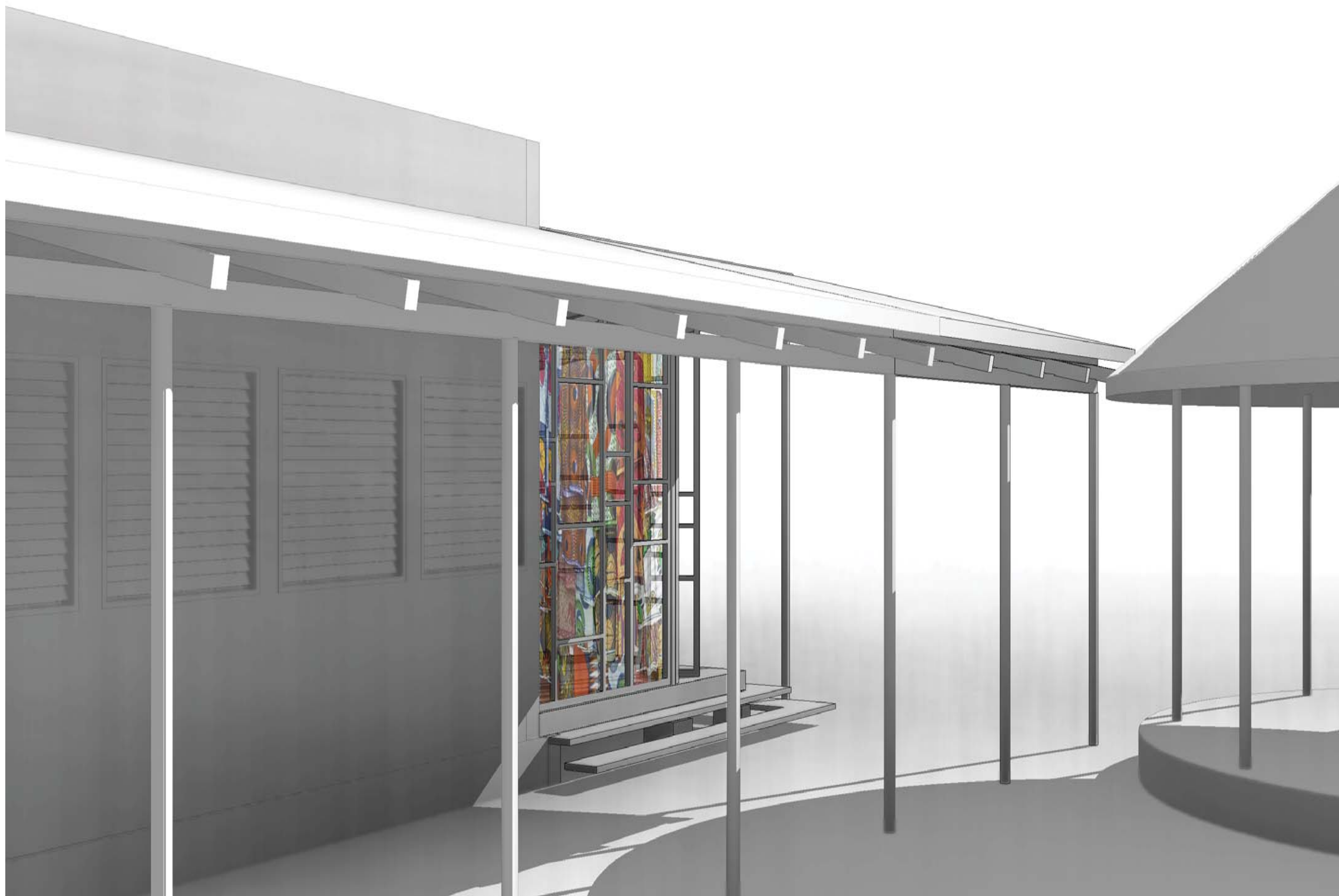
∴ **LOCAL KNOWHOW** and building techniques

∴ **SIMPLE SHAPE** – shape that adapts its volume to the courtyard – it uses the “forgotten space” in between library and guard’s house, it uses the line of existing sunshade marquise and prolongs it to form the courtyard of UNIFIED look

∴ **ELEVATED FLOOR AND LIGHT STRUCTURE** – there is drainage output of kafuli courtyard that cannot be plugged by solid concrete floor...

∴ **STEPS – TRANSITION** between interior and exterior of the shelter – people are welcome to sit on it

∴ **PAYOTTE** for the tourist again – all weaving “bazar” to be moved away from payotte to rededicate the space to relax again



THE ART SHELTER FOR THE WOMEN - **WEAVERS**

KafuLi

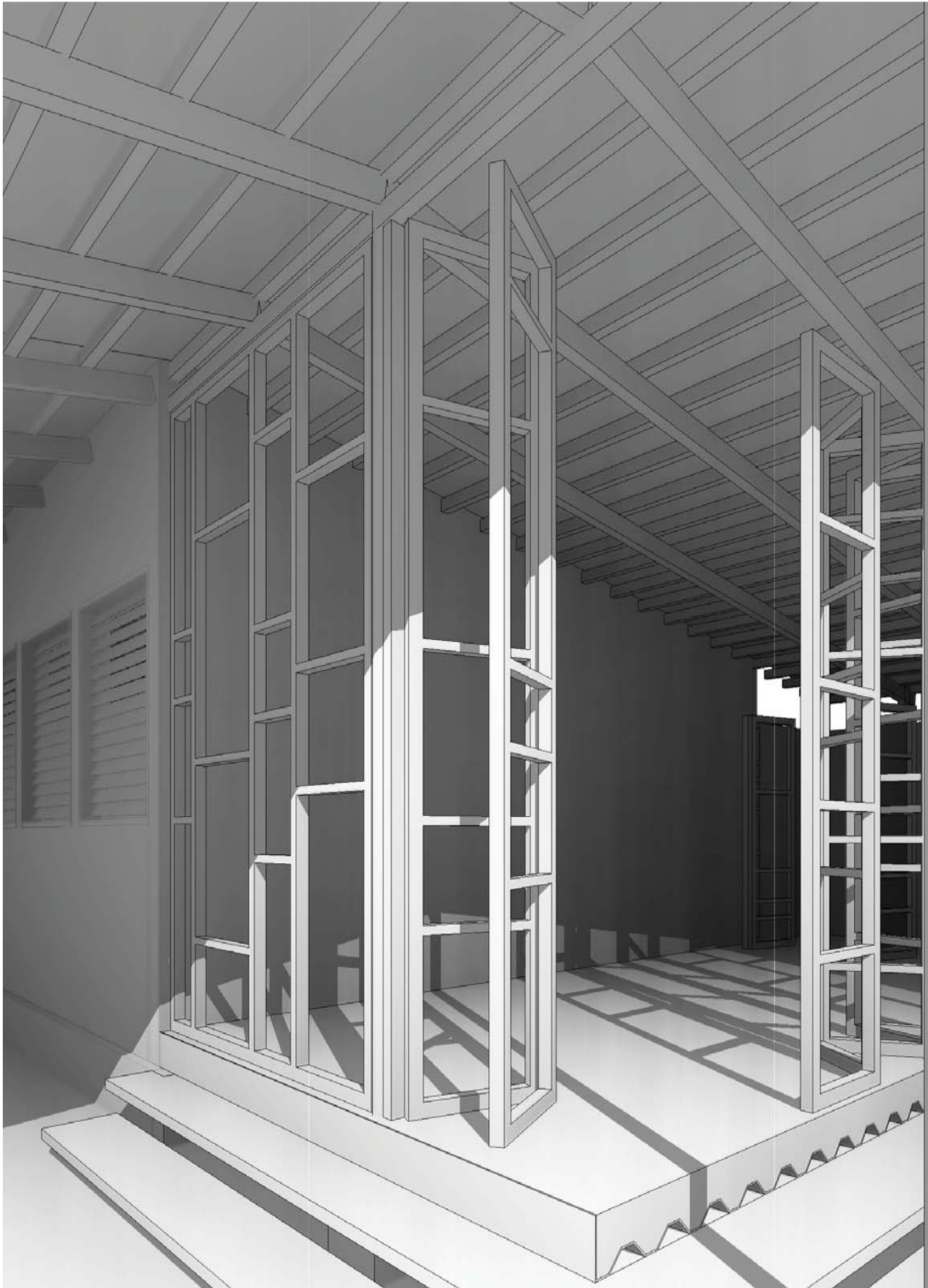
CIGLER | MARANI UNLIMITED

VISUALISATION



THE ART SHELTER FOR THE WOMEN - **WEAVERS**

KafuPc



THE ART SHELTER FOR THE WOMEN - WEAVERS

KafuLi

CIGLER | MARANI UNLIMITED

VISUALISATION



THE ART SHELTER FOR THE WOMEN - **WEAVERS**

KafuLi

CIGLER MARANI UNLIMITED

VISUALISATION

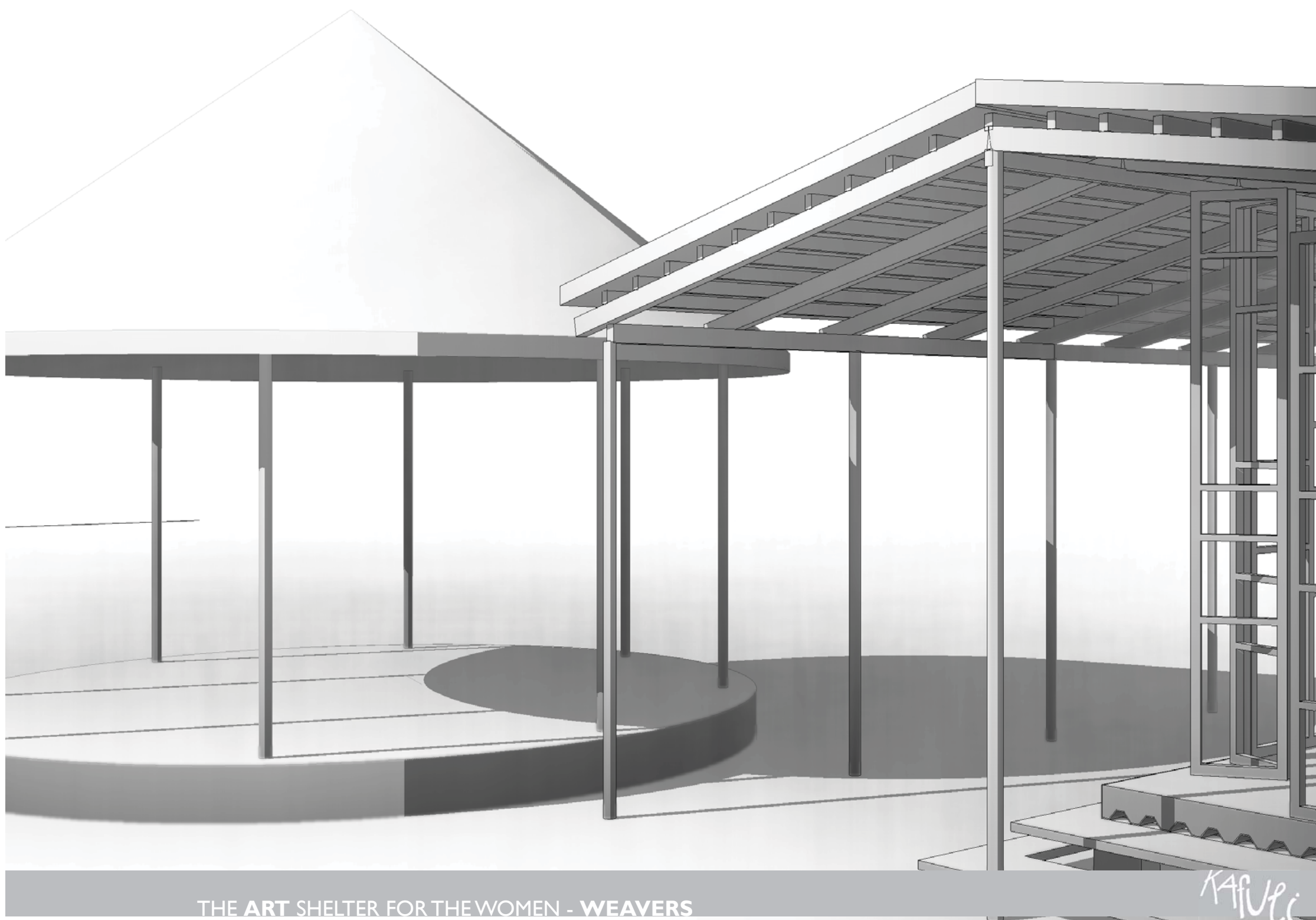


THE ART SHELTER FOR THE WOMEN - WEAVERS

KafuUci

CIGLER | MARANI UNLIMITED

VISUALISATION

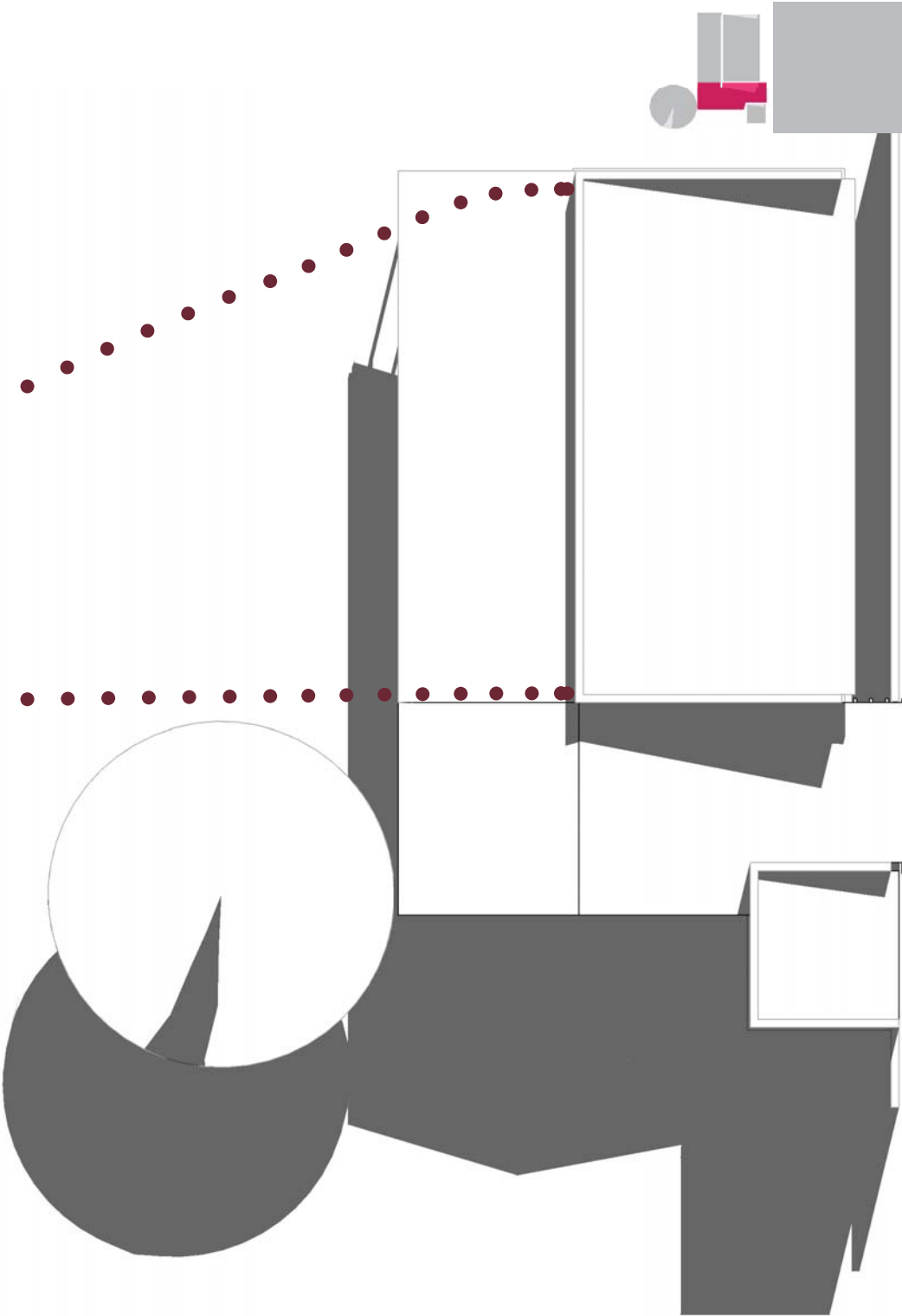
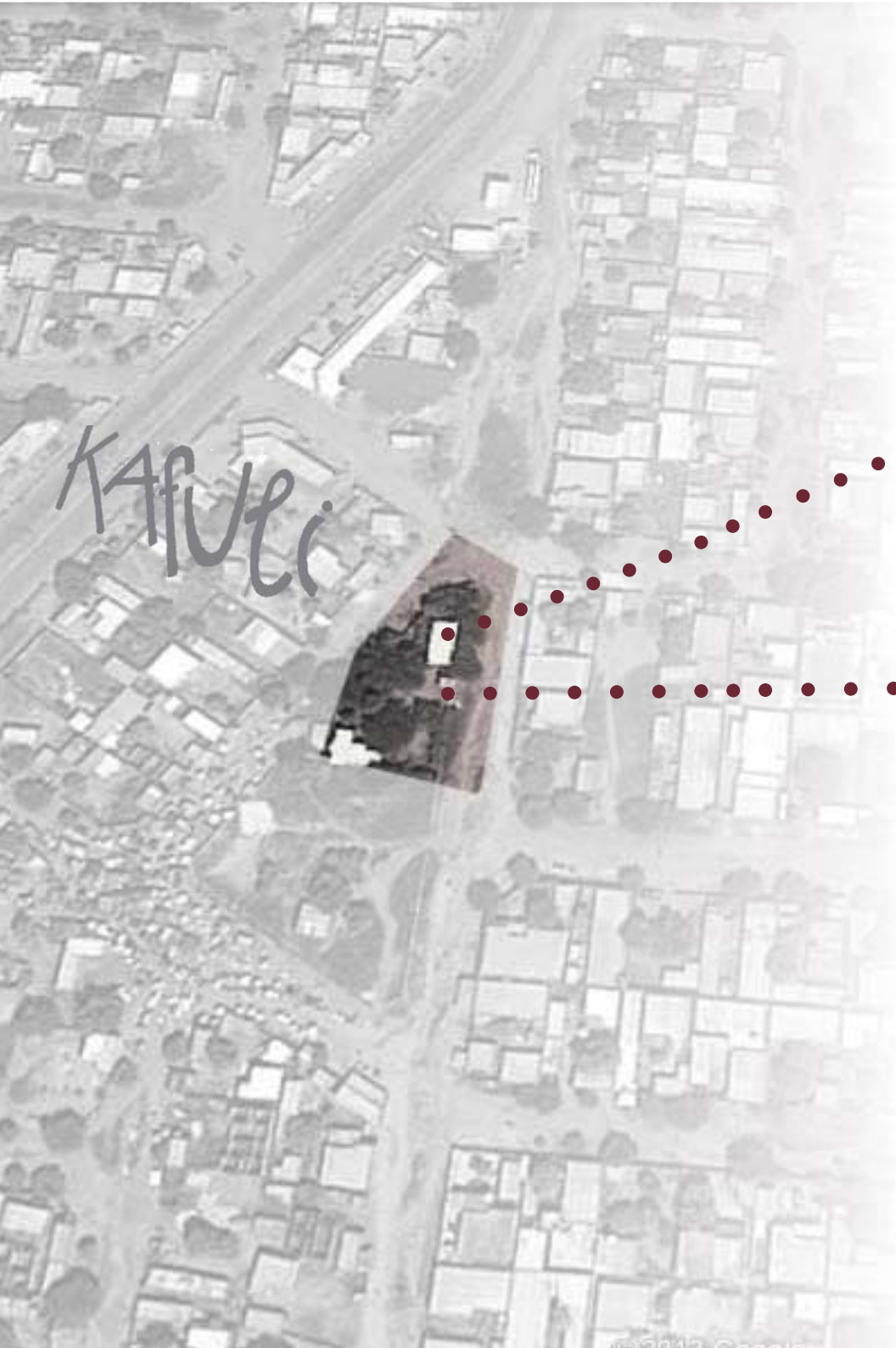


THE ART SHELTER FOR THE WOMEN - **WEAVERS**

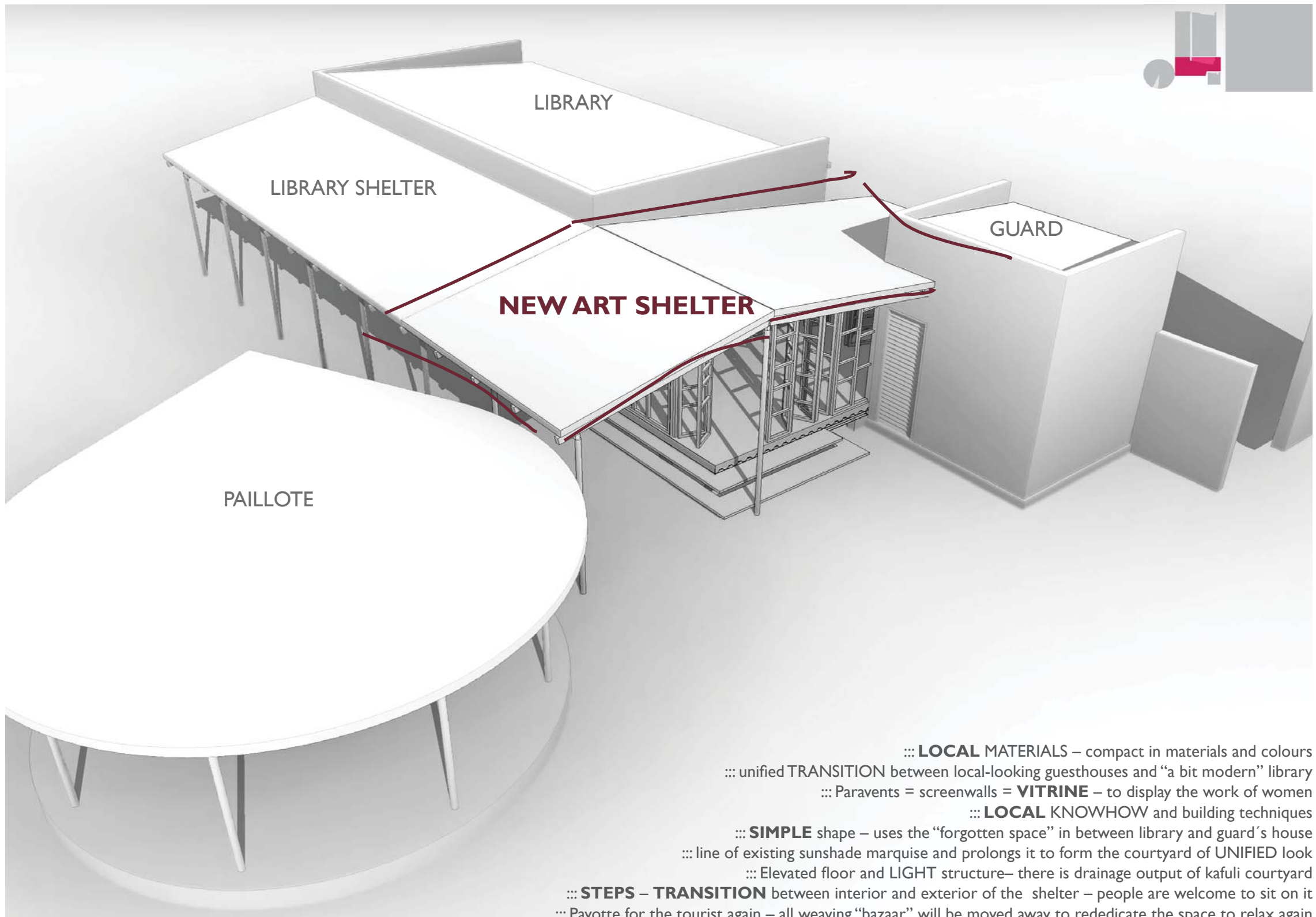
KAFUCCI

CIGLER | MARANI UNLIMITED

VISUALISATION

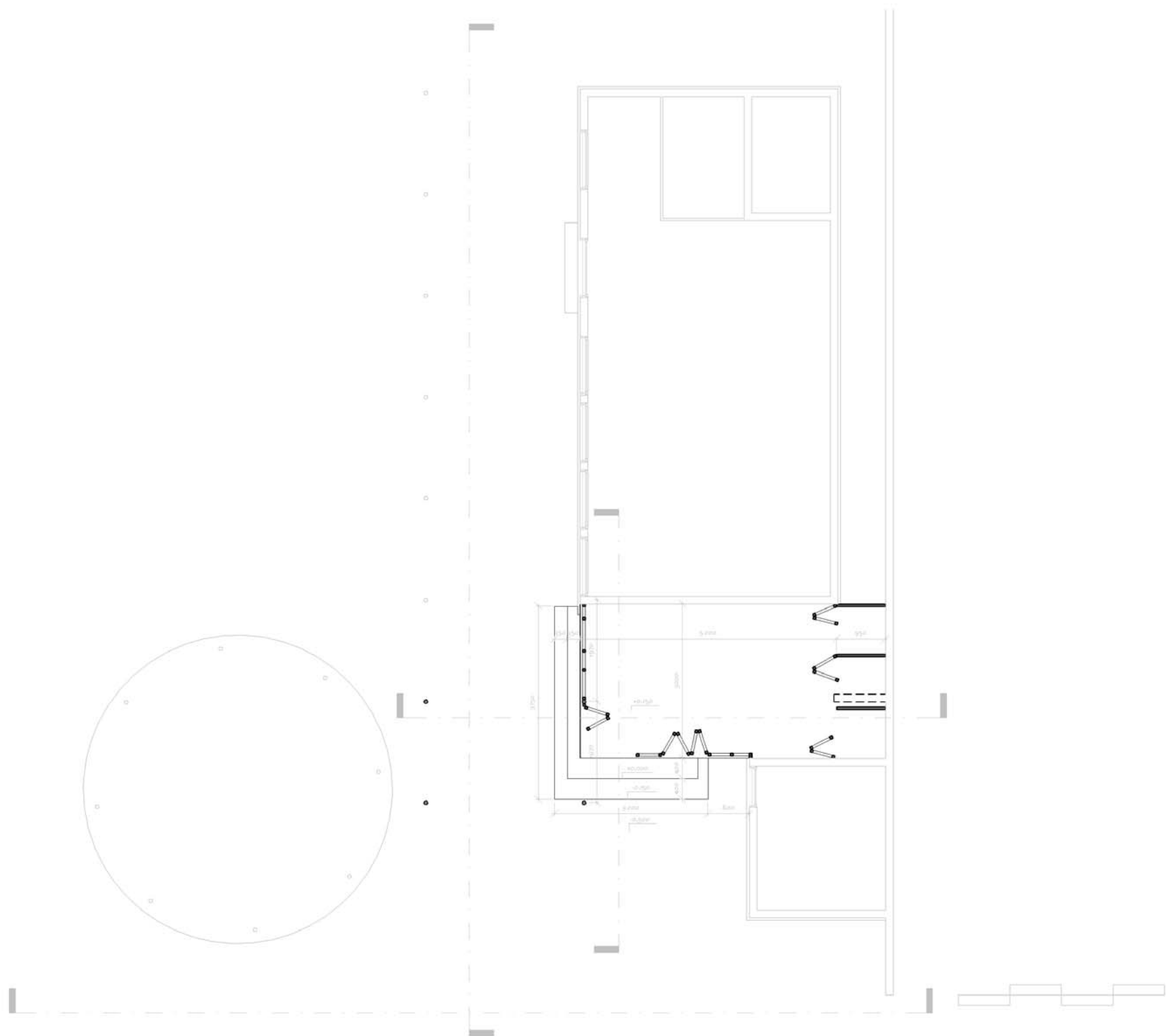


THE ART SHELTER FOR THE WOMEN - **WEAVERS** *KAPULI*



THE ART SHELTER FOR THE WOMEN - **WEAVERS**

KafuP

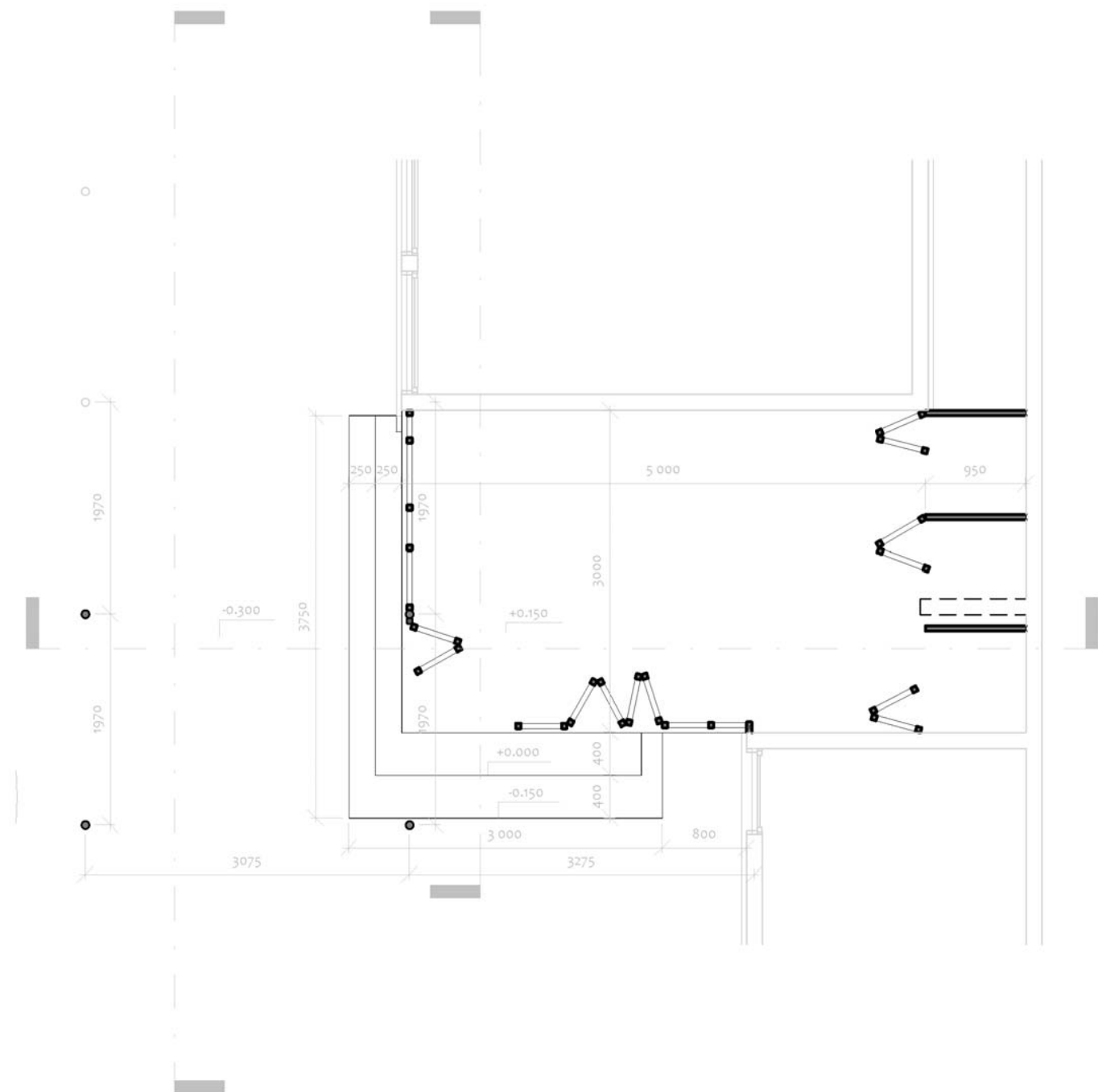


THE ART SHELTER FOR THE WOMEN - **WEAVERS**

KafiUpi

CIGLER | MARANI UNLIMITED

PLAN



THE ART SHELTER FOR THE WOMEN - **WEAVERS**

KAPUPi

CIGLER | MARANI UNLIMITED

PLAN IN DETAIL

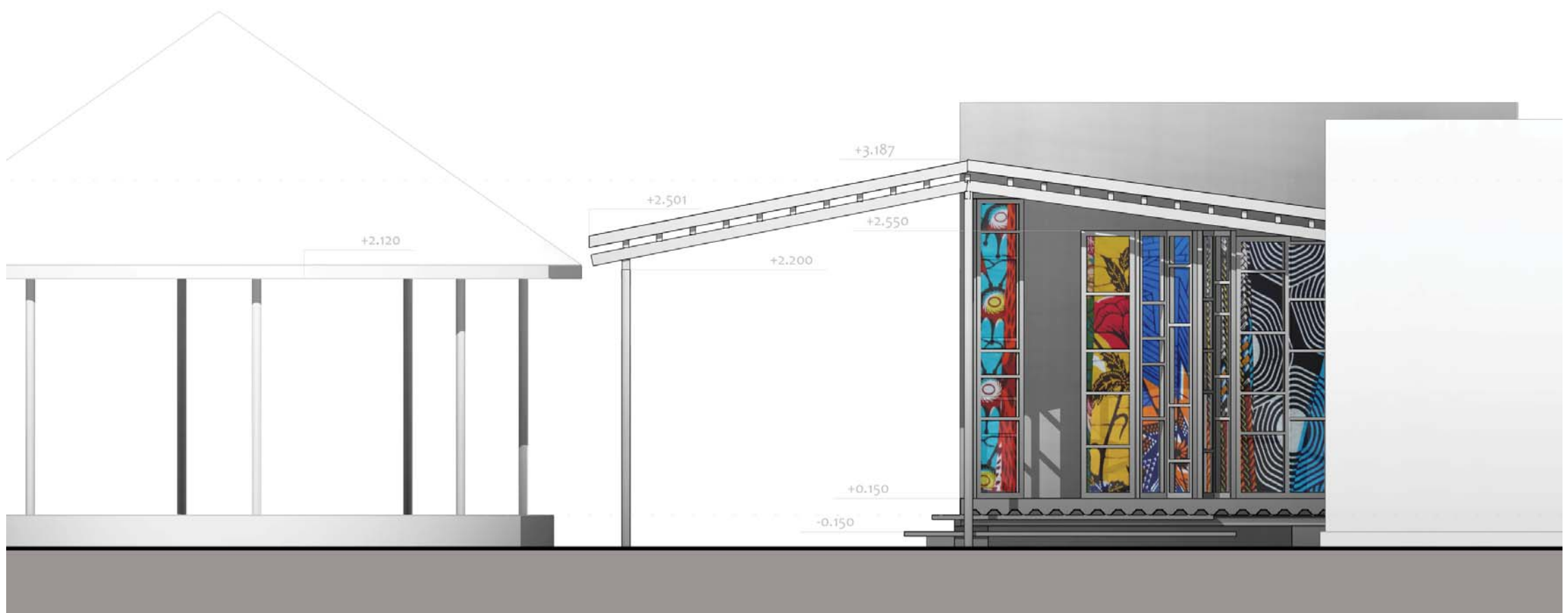


THE ART SHELTER FOR THE WOMEN - **WEAVERS**

K4Upi

CIGLER | MARANI UNLIMITED

WEST ELEVATION

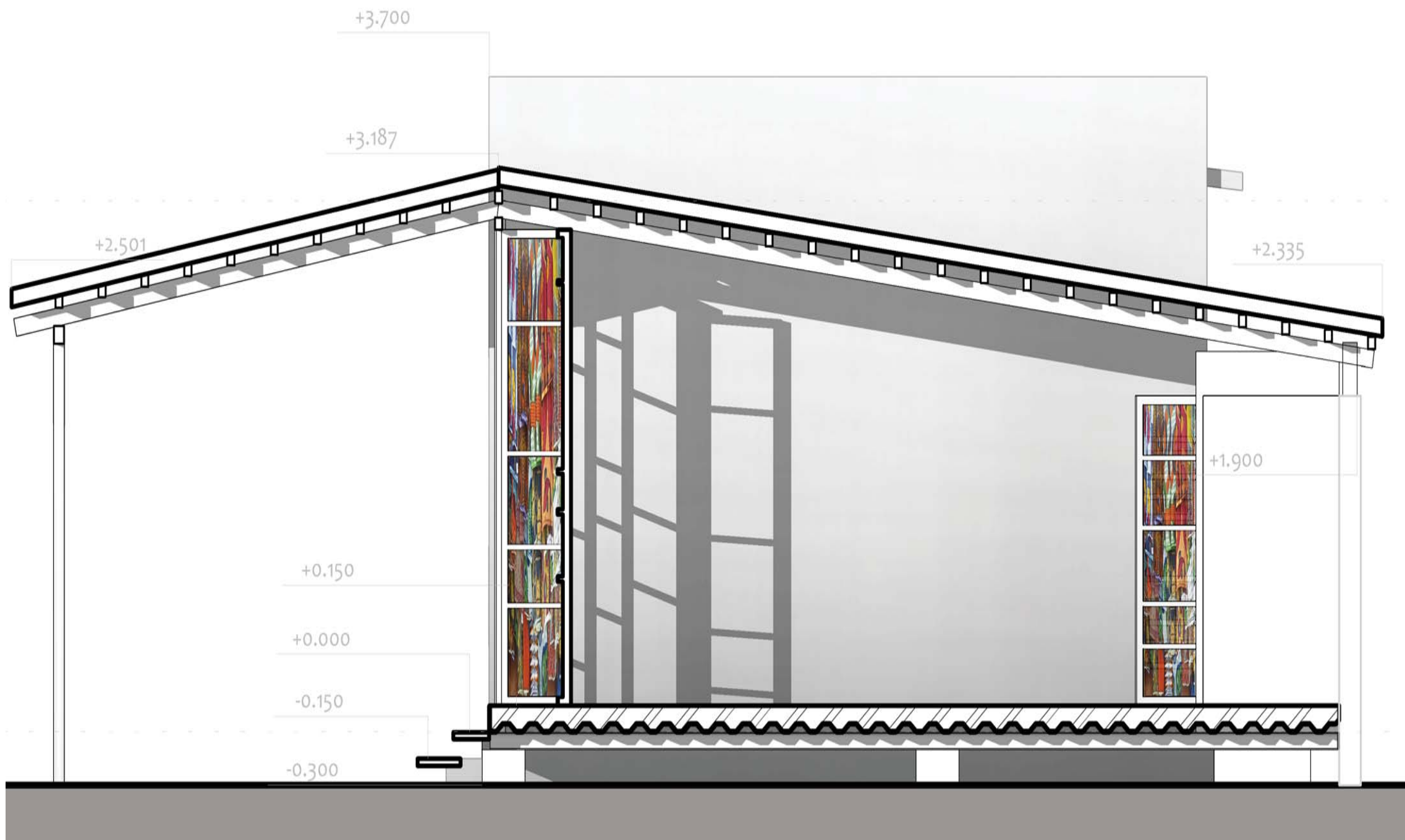


THE ART SHELTER FOR THE WOMEN - **WEAVERS**

K4iUpi

CIGLER | MARANI UNLIMITED

SOUTH ELEVATION

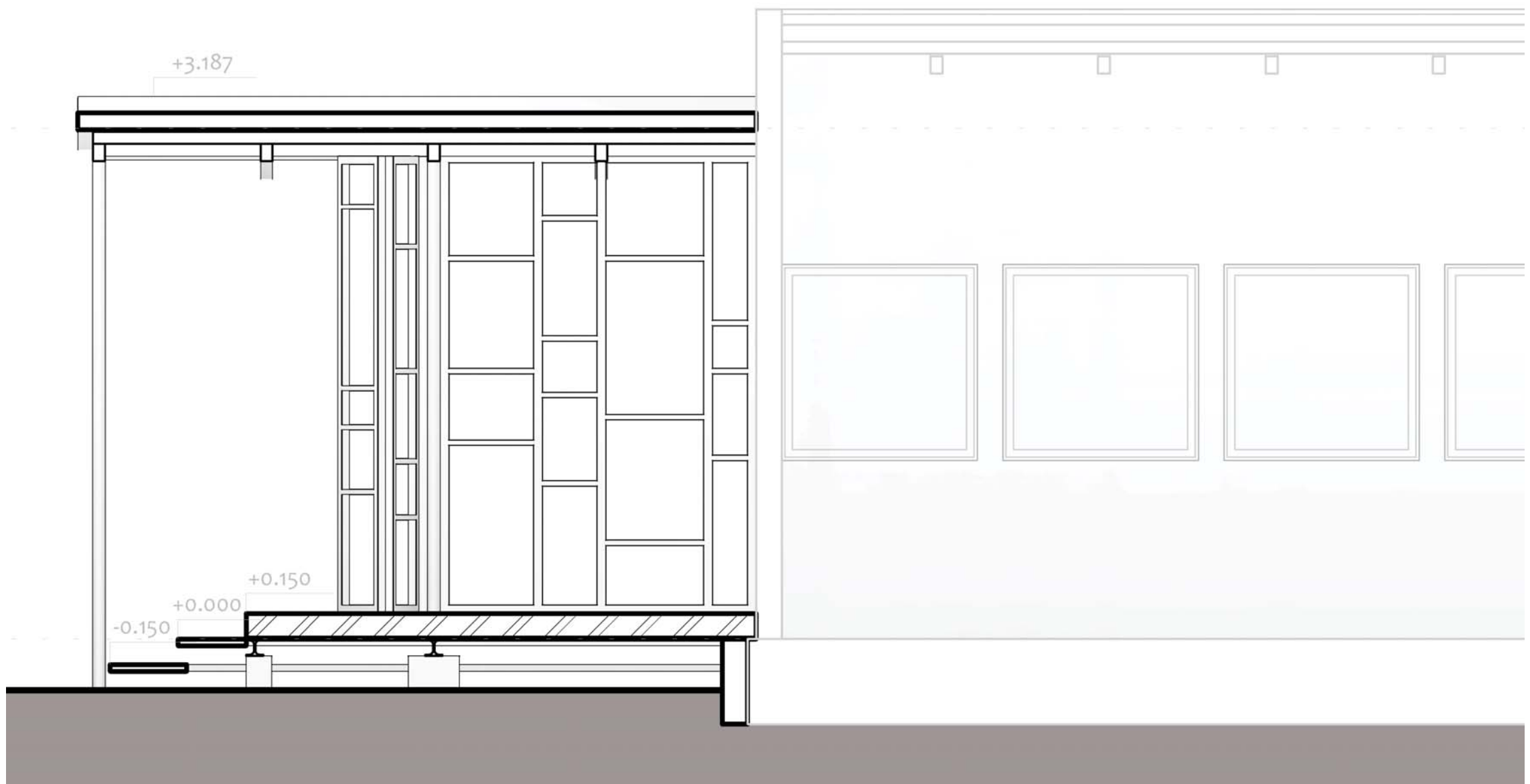


THE ART SHELTER FOR THE WOMEN - **WEAVERS**

KafuP

CIGLER | **MARANI** UNLIMITED

TRANSVERSAL SECTION



THE ART SHELTER FOR THE WOMEN - **WEAVERS**

K4iUpi

CIGLER | MARANI UNLIMITED

LONGITUDINAL SECTION

Table 1 Salaries and management costs

Description	description FR	Quantity	Single price CFA	Total CFA	Total €
Construction maoeuvre (for 20 days)	Construction - maoeuvre (20 jours)	1,5 x 20	1500	45 000,0	68,4
Construction worker (for 20 days)	Construction - ouvrier (for 20 days)	2 x 20	3000	120 000,0	182,4
Petrol for material transport	carburant pour le transport du materiel	1	10000	10 000,0	15,2
Phone expenses	unités de telephone	1	10000	10 000,0	15,2
Total				185 000,0	281,2



Table 2 Quantity and single price for material

needed	description FR	Quantity unit	Single price CFA	Single price €	Quantity	Total price CFA	Total price €
floor							
concrete for foundations	beton pour les fondations	m3	25 000,0	38,0	0,5	12 500,0	19,0
cement	ciment	bag	6 500,0	9,9		0,0	0,0
metal beams	poutres en metal (H100)	m	6 000,0	9,1	10,0	60 000,0	91,2
corrugated iron sheet	tole ondulée	m2	3 000,0	4,6	18,0	54 000,0	82,1
metal points	crochets en metal	pcs	200,0	0,3	30,0	6 000,0	9,1
concrete layer for floor	couche de béton non armé	m3	17 500,0	26,6	2,3	39 375,0	59,9
formwork for floor (300mm)	coffrage (300mm)	m	2 000,0	3,0	6,0	12 000,0	18,2
steps							
concrete for foundations for steps	beton pour les fondations des escaliers	m3	25 000,0		0,3	6 250,0	0,0
metal structure for steps	structure métale pour les escaliers	pcs	2 200,0		5,0	11 000,0	0,0
wooden steps	escalier en bois	m	2 000,0		7,0	14 000,0	0,0
wax layer for steps	traitement du bois - cirage avec les vernis	bouteille	2 800,0		1,0	2 800,0	0,0
vertical structure							
concrete foundation for columns	beton pour les fondations des colonnes	m3	25 000,0		0,3	6 250,0	0,0
cement	ciment	bag	6 500,0	9,9		0,0	0,0
metal columns (dia 7,5, height 2500mm)	colonnes en métal (dia 7,5, hauteur 2500mm)	pc	8 000,0		2,0	16 000,0	0,0
metal columns (dia 7,5, height 3200mm)	colonnes en métal (dia 7,5, hauteur 3200mm)	pc	10 000,0	15,2	2,0	20 000,0	30,4
paravan partitions						0,0	
frames - workforce	cadres en bois - travail	pc	2 500,0	3,8	19,0	47 500,0	72,2
wood fro frames	bois pour les cadres	m	2 000,0	3,0	6,0	12 000,0	18,2
weaved fabrics (width 40cm)	tissus (largeur 40cm)	m	900,0	1,4	42,0	37 800,0	57,5
roof							
beams 100*70mm	poutre en bois 100*70mm	m	1 400,0	2,1	56,8	79 520,0	120,9
contrabeams 80*60mm	contrapoutres 80*60mm	m	1 200,0	1,8	75,2	90 240,0	137,2
straw	paille	m2	2 000,0	3,0	36,0	72 000,0	109,4
others						0,0	
demolition and cleaning	demolition et nettoyage	pc	5 000,0	7,6	1,0	5 000,0	7,6
change of the orientation of Guardian´s door	renversement de la porte du guardian	pc	5 000,0	7,6	1,0	5 000,0	7,6

Table 3 Summary

Description EN	description FR	CFA	€
salaries et management	salaires	185 000,0	281,2
Material	materiel	609 235,0	840,5
Reserve (5%)	reserve	39 711,8	60,4
Total costs		833 946,8	1 182,0

THE ART SHELTER FOR THE WOMEN - **WEAVERS**

KAPUPi

CIGLER | **MARANI** UNLIMITED

BUDGET



TISSUS BURKINABÉS



TISSUS BURKINABÉS



TISSUS BURKINABÉS

THE ART SHELTER FOR THE WOMEN - WEAVERS



MASORO VILLAGE PROJECT

KafuUci

<http://unlimitedcma.com>

CIGLER | MARANI | ARCHITECTS
CIGLER | MARANI UNLIMITED
architecture
within human
commitment